

TOOLS AND MATERIALS CHECKLIST

CUT

- Level or straightedge
- Utility knife
- Hammer

SET

- Polymer-modified thin-set mortar such as VersaBond™ Bonding Mortar or FlexBond® Premium Bonding Mortar or
- Mix PremiumPlus™ or MasterBlend™ thin-set mortars with Acrylic Mortar Admix (AMA)
- Notch trowel

FASTEN

- 1-1/2" galvanized roofing nails or SuperiorBilt™ Concrete Backerboard Screws
- Drill
- 2" wide fiberglass mesh backerboard joint tape

GROUT

- PolyBlend® Sanded or Non-Sanded Grout
- Grout float

CARE

- SurfaceGard® Penetrating Sealer
- TileLab® Grout & Tile Cleaner

For Best Quality Use SuperiorBilt Tools.

SUPERIORBILT.

Product Specifications

Sizes

1/2" (12mm) thickness
36" x 60" length (90cm x 120cm length)
13 lbs. (36" x 60" sheet)

Uses

- Walls, ceilings, countertops and vanities
- Interior use only
- Use under any tile or natural stone

Warranty

Custom Building Products offers a 10 year labor and materials warranty on EasyBoard. Call Technical Services at 800-282-8786 for more information.

Limitations

Like other backerboards, EasyBoard must not be used as a structural load-bearing member. EasyBoard is unaffected by water but is not a water barrier. EasyBoard is not approved for use in any floor installation.

Warning

Avoid breathing silica dust. This product when cut, drilled, or abraded produces dust containing Free Silica which may cause cancer or delayed lung injury (Silicosis) if inhaled. Work outdoors, in a well-ventilated area, or use mechanical ventilation. Please wear approved safety glasses and dust mask. If in dusty areas or where airborne dust exceeds PEL wear NIOSH/MSHA approved respirator. This product contains one or more chemicals known to the State of California to cause cancer. See Material Safety Data Sheet for detailed information.

Technical Data (1/2" EasyBoard)

Weight <1.0 lb./sq.ft

High impact strength in use

Resistant to flexing when used in ceramic tile installations

Not affected by water

Will not support mildew growth

Tensile strength to surface >65 psi

Compressive strength equal to 5000 lbs over a 4" x 4" wall tile (300 psi)

Exceeds Tile Council of America (TCA) specification for these Cementitious-Coated Foam Backer Board Installation Systems

W246-03 – over metal or wood studs spaced 16" oc

C315-03 – over ceiling framing (16" and 24" oc)

B425-03 – over tub surrounds

B426-03 – in conjunction with shower receptors & wood or metal studs

From the makers of WonderBoard® and RhinoBoard™



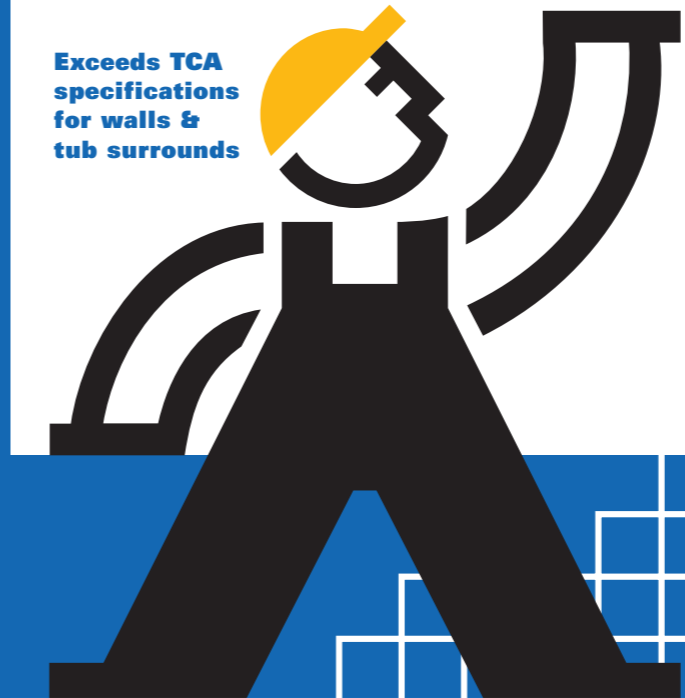
Seal Beach, CA 90740
800-272-8786
www.custombuildingproducts.com

Nationwide manufacturing facilities.
Printed in the U.S.A. EBIG 5/03

EASYBOARD®

ULTRA LIGHT, STRONG IN USE

Exceeds TCA specifications for walls & tub surrounds

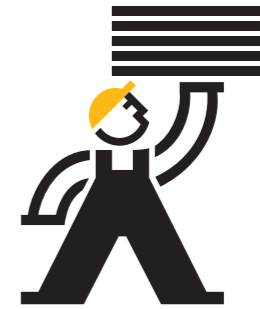


ULTRA LIGHT BACKERBOARD

Installation Guide

■ FOR TILING
WALLS &
COUNTERTOPS

10 year labor & materials warranty



Ultra Light
Easy to carry,
weighs less than
13 lbs.



Easy to Cut
Just use a utility knife

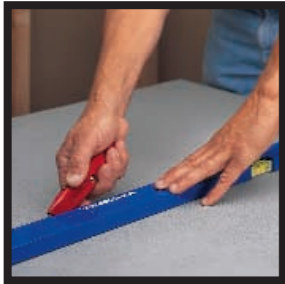


Easy to Install
Fastens like
other backerboards



Strong in Use
Ideal for walls and
countertops

Prep



Cut EasyBoard with an ordinary utility knife



Mark cutouts needed, then cut

Cutting

• Always place board panel with label side out, removing label prior to tile installation.

• With utility knife and straightedge, cut through board on label side.

• If needed, cut mesh on other side.

Please wear approved safety glasses and dust mask.

Making Cutouts

• Trace around area to be cut out.

• Cut through board on both sides.

• Knock out piece and, if needed, trim with utility knife.

• After cutting the panels and making any cutouts, you're ready to begin EasyBoard installation.



Wall Installation



Staple 15 lb. roofing felt to 2" x 4" studs

Use 1/2" EasyBoard for all Wall Installations

• Studs should be spaced no further than 16" o.c.

• In tub surrounds and other wet areas, nail or staple 15 lb. roofing felt or 4 mil. polyethylene sheeting to studs. Start at the bottom of the wall and work your way up.

• Install EasyBoard panels label side out, removing label prior to installation.



Simply nail using galvanized roofing nails

• Stagger panel joints to eliminate a continuous gap line across the wall.

• Fasten EasyBoard panels to studs every 6" around all edges and throughout the board using 1-1/4" concrete backerboard screws or 1-1/2" galvanized roofing nails. Around perimeter of each board, position fasteners within 1/2" to 1" of edges. Leave a 1/8" (3 mm) gap between panels, corners and floor.



Tape panel joints

• Fill gaps between panels and corners with a polymer-modified thin-set mortar, then embed 2" wide (5.1cm) fiberglass mesh tape and smooth.

TIP:

When planning layout and cuts, remember EasyBoard is installed label side out. Remove label prior to installing tile.

TIP:

Save time by pre-cutting all panels then fastening.

Countertop Installation



Countertop installation

Use 1/2" EasyBoard for all Countertop Installations

• Using a 1/4" x 1/4" x 1/4" square-notch trowel, apply a leveling bed of polymer-modified thin-set mortar to the 3/4" exterior-grade plywood roughtop.

• Install EasyBoard panels label side up, removing label prior to installation.



Installation over existing laminate

• Fasten EasyBoard panels every 6"-8" throughout the panel using 1-1/4" concrete backerboard screws or 1-1/2" galvanized roofing nails. Around perimeter of each board, position fasteners within 1/2" to 1" of edges.

• Fill all joints between panels with a polymer-modified thin-set mortar, then embed 2" wide (5.1cm) fiberglass mesh tape and smooth.

Over Existing Plastic Laminated Countertops

• If thoroughly bonded and rigid, clean to remove all contaminants then roughen surface with coarse sander.

Laying Tile



Press tiles into place

Following the bonding mortar instructions, you can now install the tile.

• Clear all debris from EasyBoard and vacuum to eliminate excess dust or dirt. Lightly dampen panels with sponge or cloth.

• Use a polymer-modified thin-set mortar and spread with a notch trowel (see trowel labels for correct size based on tile dimensions).

• Press tile firmly into place in a perpendicular motion across ridges, moving back and forth 1/8" - 1/4" (3mm - 6mm).

TIP:

Tile installation should cure 24 hours before applying grout.